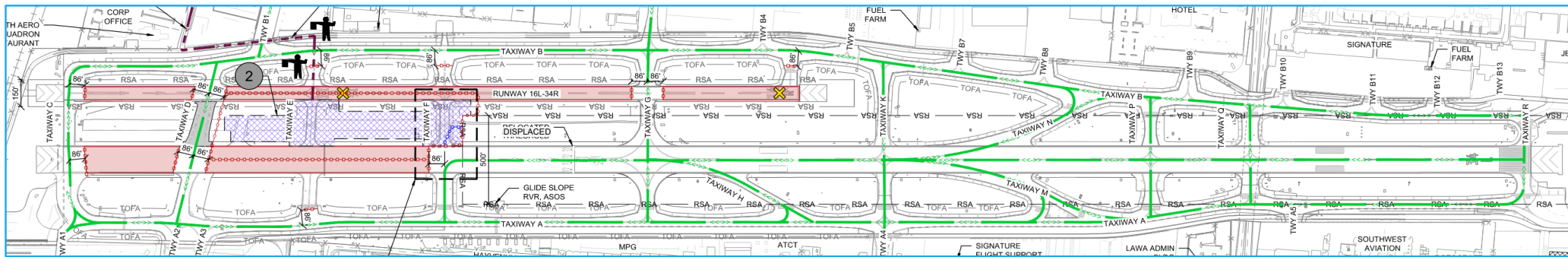


Phase 2 – Taxiway E (east) and F (east) Reconstruction

31 Calendar Days, April 17 to May 18



Runway 16R-34L Declared Distances

	RWY 16R		RWY 34L	
	Existing	Proposed	Existing	Proposed
TODA			8,001'	5,000'
TORA	8,001'	5,824'	8,001'	5,000'
ASDA			7,261'	4,824'
LDA	6,570'	5,224'		

Construction Phase Notes

Construction

1. Work Hours: Daytime, Minimum 10-hr shifts.
2. Work Days: Monday thru Saturday.
3. Duration: 31 Calendar Days

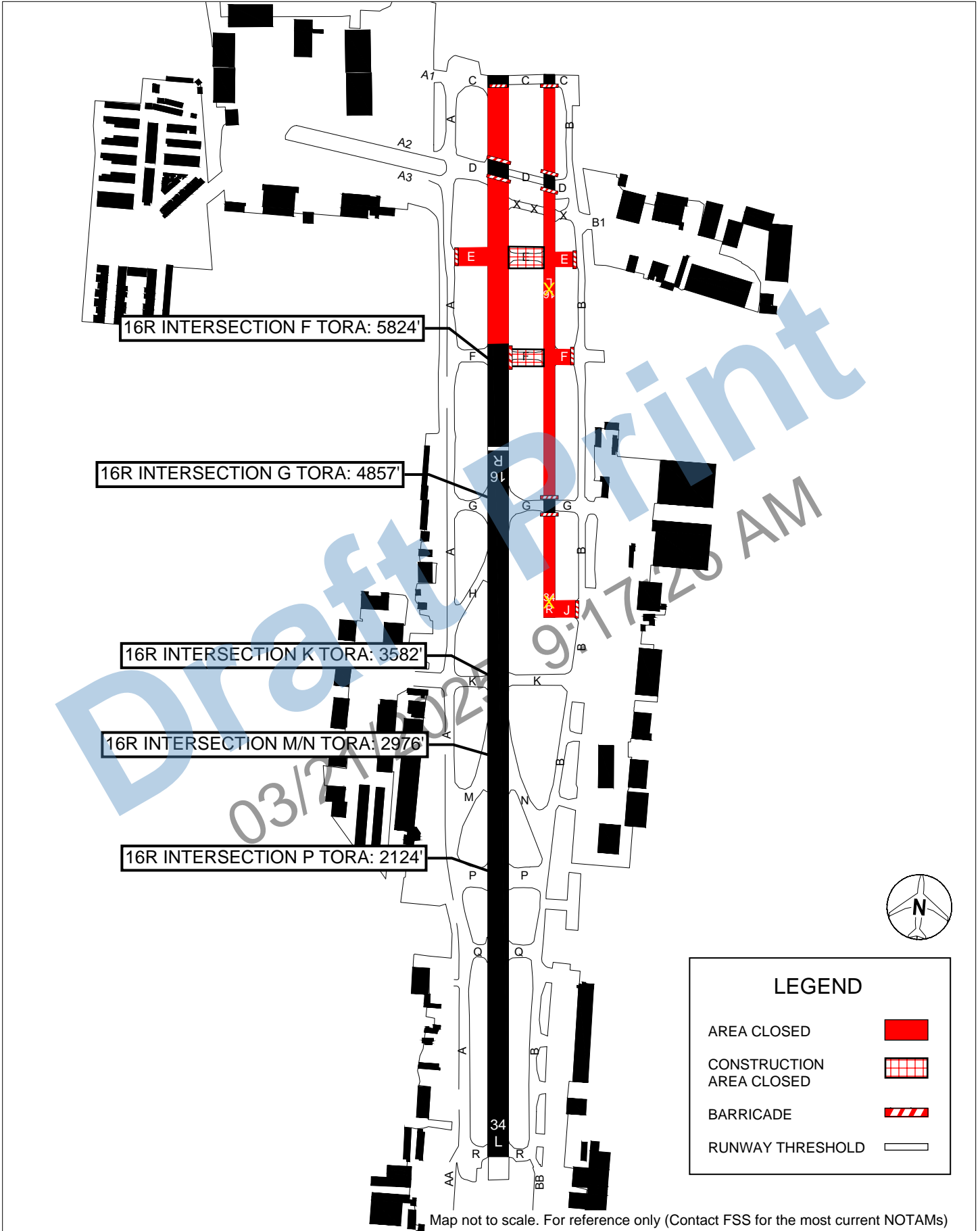
Airfield Operations

1. Runway 16L-34R – Closed
2. Runway 16R-34L – Threshold Displaced, Shortened
 - a. 16R ILS Not Available
 - b. 16R PAPI Not Available, Temporary PLASI Available

VNY AIRPORT

RWY 16R Shortened Declared Distances
Construction Phase 2 and 3A (Est. 4/17/25 to 5/20/25)

Current as of: 3/25/25



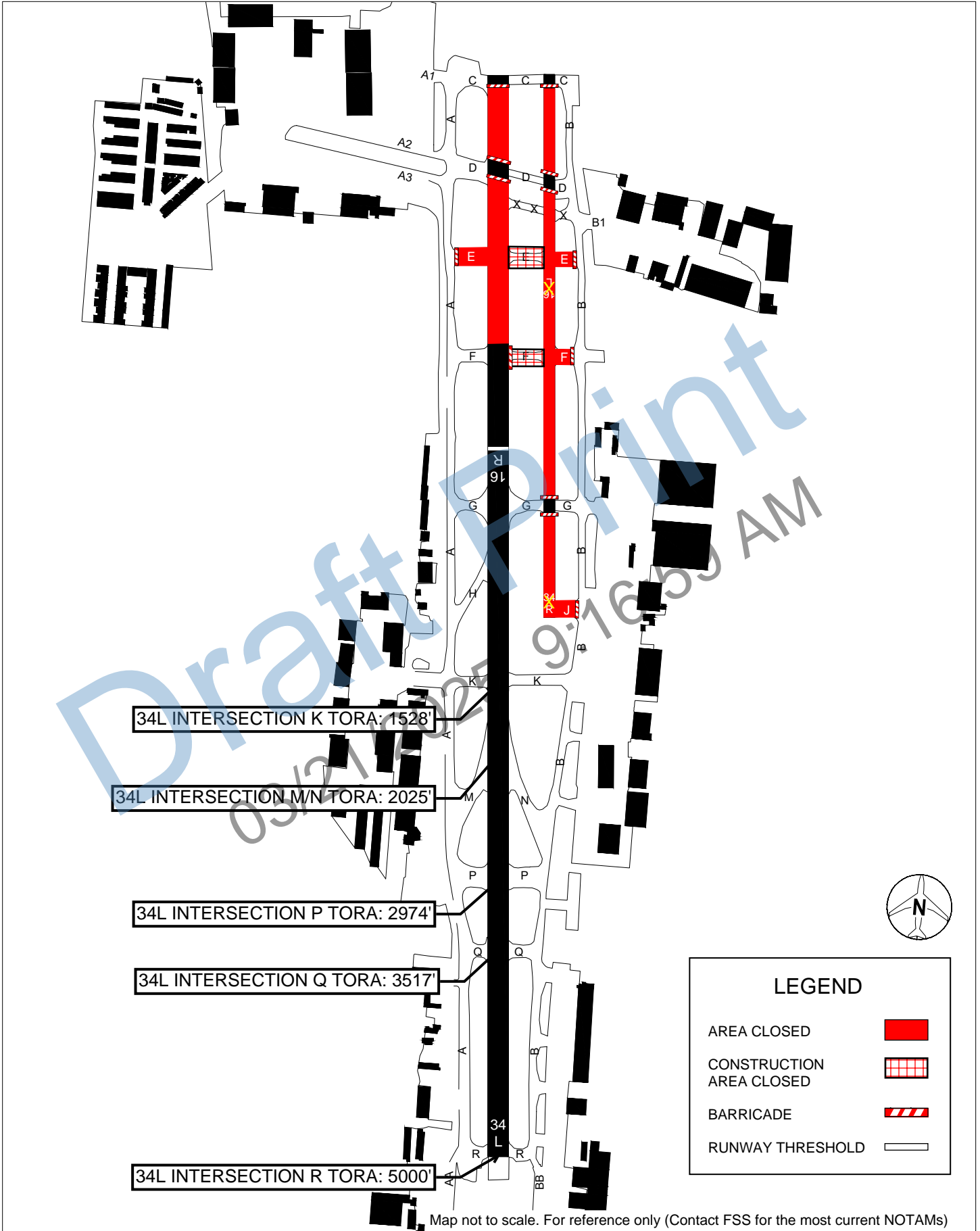
Map not to scale. For reference only (Contact FSS for the most current NOTAMs)

VNY AIRPORT

RWY 34L Shortened Declared Distances

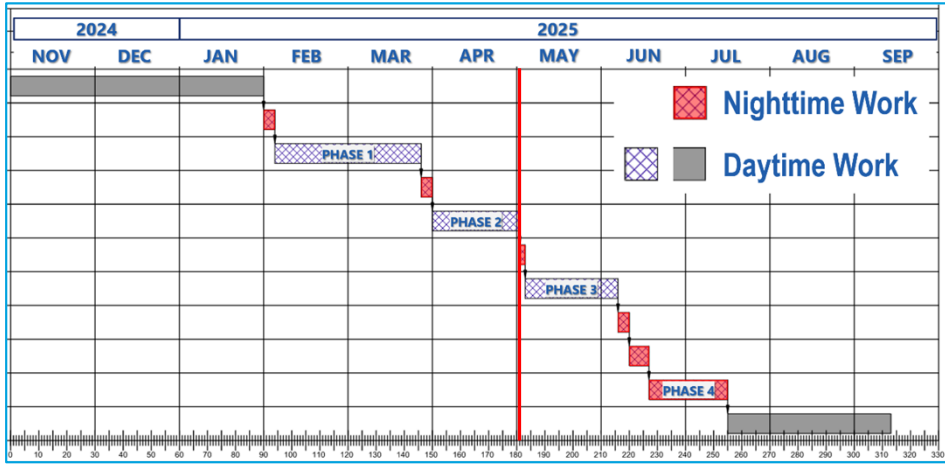
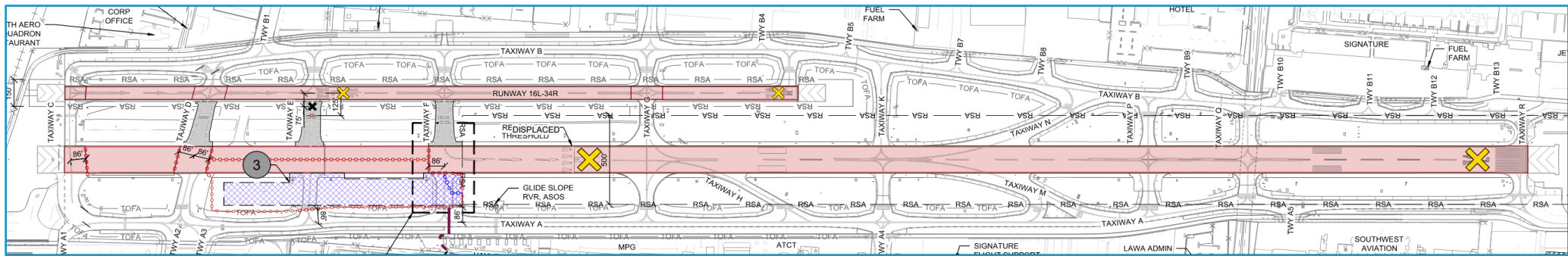
Construction Phase 2 and 3A (Est. 4/17/25 to 5/20/25)

Current as of: 3/25/25



Map not to scale. For reference only (Contact FSS for the most current NOTAMs)

Phase 3A – Phase 3 Pre-Work 2 Calendar Nights, May 18 to May 20



Construction Phase Notes

Construction

1. Work Hours: Nighttime 2230 to 0600.
2. Work Days: Sunday to Tuesday.
3. Duration: 2 consecutive calendar nights.
4. Other Criteria:
 - a. Runway 16R-34L shall reopen by 0600 at the end of the first night.
 - b. Runway 16L-34R opening and taxiway closures / openings shall take effect over the final night of the phase.

Airfield Operations

1. Runway 16L-34R and 16R-34L – Closed
2. Various Taxiways on north end – Closed